



# AN-6150 Modular Annunciator Display Unit

FOR POWER GENERATION, TRANSMISSION & DISTRIBUTION, PETROLEUM, PETROCHEMICAL AND OTHER PROCESS INDUSTRIES



## MODULAR ANNUNCIATOR

The Model AN-6150 is a compact, cellular display unit which allows a wide variety of customer configurations. Any combination of four standard window sizes can be accommodated in each cell. These cells can be configured in any matrix up to 4 high and 4 wide. The single module is designed to DIN 2.84" x 5.67" standard.

The AN-6150 Modular Display Unit is suitable for panel mounting. Six window colors are available which can be back lit by incandescent lamps. Alternatively, LED lamps are available to meet long life requirements. Legends are laser printed on clear transparencies to allow changes to be done by the customer. Pushbutton membrane switches can also be added for Silence, Test, Acknowledge and Reset functions. These units come standard with flush panel mounting, including hardware and rear terminal block field connections. Please refer to ordering information for additional options.

### WINDOW COLORS

Red, Amber, Yellow, Green, Blue, White illuminated by incandescent lamps. Red, Amber, Green illuminated by LED clusters.

### LEGEND

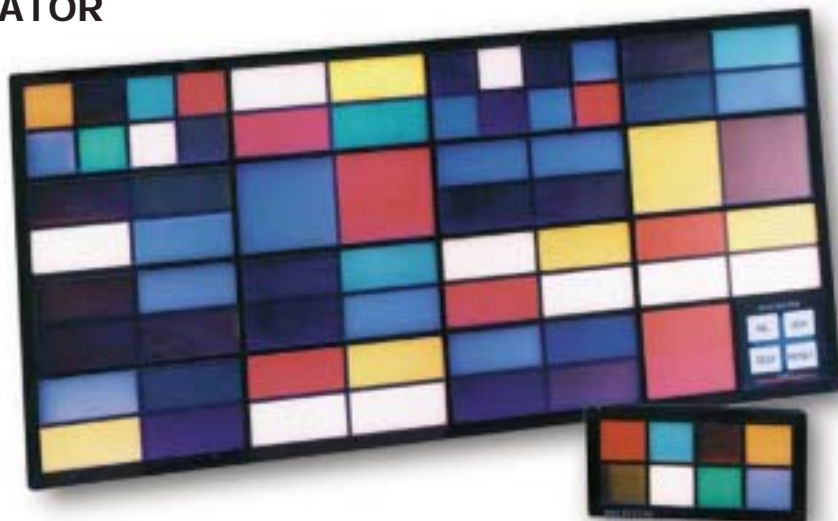
Laser printed on clear film or engraved filters. Secret window until lit and secret legends optional.

### ILLUMINATION

#656 wedge type bulb, long life, 28 volt, 0.06 Amp filament lamp or equivalent. Dual lamps in all window sizes. Dual lamps are optional in small window size. Optional illumination by LED cluster each 24 volt, 0.025 amp with limited colors.

### WINDOW SIZES

Four standard sizes.  
 Small: 0.98 in. x 1.14 in. (25 mm x 29 mm)  
 Medium: 0.98 in. x 2.40 in. (25 mm x 61 mm)  
 Large: 2.13 in. x 2.40 in. (54 mm x 61 mm)  
 Ex Large: 2.13 in. x 4.96 in. (54 mm x 126 mm)



## FEATURES AND BENEFITS

- Low Cost Visual Display
- Configurable in 4 Standard Window Sizes
- Compact High-density Design
- Laser Printed Legends
- Easy Installation and Maintenance

Sizing Details: in./(mm)

	Number of Cells Wide				
	1	2	3	4	5
Bezel Width	5.67 (144)	10.79 (274)	15.91 (404)	21.02 (534)	-
Cut-out Width	5.43 (138)	10.55 (268)	15.67 (398)	20.79 (528)	-
	Number of Cells High				
	2.83 (72)	5.12 (130)	7.40 (188)	9.68 (246)	12.00 (305)
Bezel Height	2.83 (72)	5.12 (130)	7.40 (188)	9.68 (246)	12.00 (305)
Cut-out Height	2.60 (66)	4.88 (124)	7.17 (182)	9.49 (241)	11.77 (299)



## SPECIFICATIONS

### CONSTRUCTION

Modular Interlocking Matrix Configuration, Multiples of Standard DIN size 72 mm x 144 mm (2.83 in. x 5.67 in.) Cells Up to 4 Cells High by 4 Cells Wide

### MOUNTING

Flush Panel Mount or Standard 19 inch Rack Panel Mount for 3 Cell Wide Display Only

### CONNECTIONS

Ribbon Cable or Terminal Block Accepting Maximum Wire Size 16 AWG

### AMBIENT WORKING TEMPERATURE

14° to 122°F (-10° to 50°C)

### RECOMMENDED WORKING VOLTAGE

24 Volts ±10% for Increased Lamp Life with 28 Volt Lamp

### POWER REQUIREMENTS

Each Cell Has a Total of 8 Plug-in Filament Lamps or LED Clusters.

Power Required per Cell: 28 Volt Lamp Working at 24 Volts:  
0.5 Amp, 12 Watts 24 Volt

LED Cluster Working at 24 Volts:  
0.2 Amp, 4.8 Watts

### CONTROL MODULE

SILENCE, TEST, ACKNOWLEDGE and RESET Membrane Pushbuttons within a Large Size Window (54 mm x 61 mm – 1/2 cell size) (2.13 in. x 2.40 in.) Including Internal Audible Device and Visual Power on Indicator

### WEIGHT

0.48 lbs. (0.22 kg) per Cell

### AN6150 Ordering Information

TYPICAL MODEL NUMBER (coded by color)

AN6150-3-5 INTB S VW 48A R STH

#### Code Description

AN6150-X-Y X = Display Height  
Y = Display Width

#### Common Service Module

INTB Integral CSM wit Pushbuttons (Touch pad mounted in the lower right cells)  
RPB Remote Panel Mounted CSM (with pushbuttons)  
NPB No Pushbutton

#### Common Service Module

S Small Window, 8 per cell  
M Medium Window, 4 per cell (0.98" x 1.14")  
L Large Window, 2 per cell (0.98" x 2.40")  
EL Extra Large Window, per cell (2.13" x 2.40")  
IMW Intermix Window Size, Matrix Must Be Included (2.13" x 4.96")

#### Window Type

VW Legends Are Laser Printed on Transparency Film (Standard)  
SW Laser Printed Legends Are Hidden Until Lit (Not available in LEDs)  
VL Legends Are Engraved on Windows  
SL Legends Are Hidden Until Lit, Engraved on Windows

#### Lamp Type

24C Incandescent Lamps, 24 VDC  
24W White LED Cluster Lamps, 24 VDC  
24R Red LED Cluster Lamps, 24 VDC  
24A Amber LED Cluster Lamps, 24 VDC  
24Y Yellow LED Cluster Lamps, 24 VDC  
24B Blue LED Cluster Lamps, 24 VDC  
24G Green LED Cluster Lamps, 24 VDC  
48W White LED Cluster Lamps, 48 VDC  
48R Red LED Cluster Lamps, 48 VDC  
48A Amber LED Cluster Lamps, 48 VDC  
48Y Yellow LED Cluster Lamps, 48 VDC  
48B Blue LED Cluster Lamps, 48 VDC  
48G Green LED Cluster Lamps, 48 VDC

#### Window Color

R Red Window  
Y Yellow Window  
G Green Window  
A Amber Window  
W White Window  
B Blue Window (not available when using LEDs)  
IMC Intermix Window Color, Matrix Must Be Included

#### Standard Options

STD/1 19" Rack Mounting for 1 High x 3 Wide Displays  
STD/2 19" Rack Mounting for 2 High x 3 Wide Displays  
STD/3 19" Rack Mounting for 3 High x 3 Wide Displays  
STD/4 19" Rack Mounting for 4 High x 3 Wide Displays  
STD/5 19" Rack Mounting for 5 High x 3 Wide Displays  
STD/6 19" Rack Mounting for 6 High x 3 Wide Displays  
STD/X 19" Rack Mounting for Units Higher than 6 High  
STY Integral Plug Connector, 32 Points per Plug  
STH Integral Control Pushbuttons  
NR No Options Required



For customer support call:

#### POWER INSTRUMENTS

255 North Union Street  
Rochester, NY 14605  
Tel: 585.263.7700  
Fax: 585.454.7805  
power.industrial@ametek.com

#### HEADQUARTERS

AMETEK Power Instruments  
50 Fordham Road  
Wilmington, MA 01887  
Tel: 978.988.4903  
Fax: 978.988.4990  
www.ametekpower.com  
power.industrial@ametek.com

#### EUROPEAN HEADQUARTERS

Unit 20, Ridgeway  
Donibristle Industrial Estate  
Dalgety Bay, Dunfermline, KY119JN  
Scotland U.K.  
Tel: 44.1383.825630  
Fax: 44.1383.825715  
sales@ametekuk.com

#### ASIA PACIFIC HEADQUARTERS

10 Ang Mo Kio Street 65  
#05-12 Techpoint  
Singapore 569059  
Tel: 65.6484.2388  
Fax: 65.6481.6588



ISO 9001 Certified