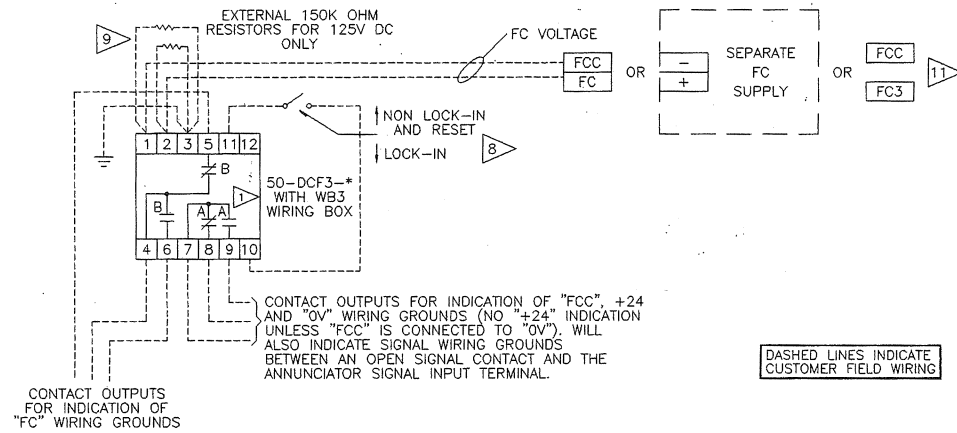
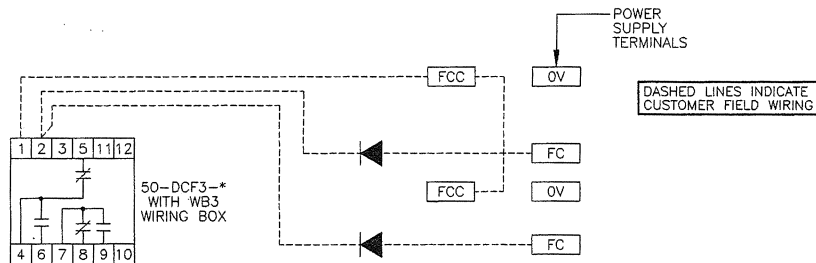


90 SERIES GROUND DETECTION FOR 12, 24, 48 OR 125 SIGNAL CONTACT APPLICATIONS
 MODEL 50-DCF3-* GROUND MONITOR, PLUGGED INTO MODEL WB-3 WIRE BOX.



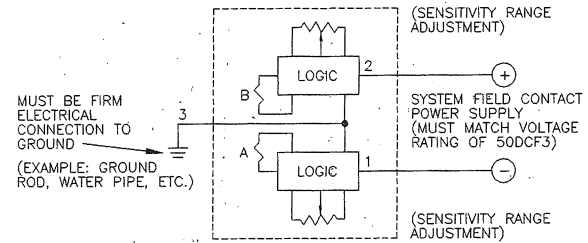
50-DCF3-* WITH 2 OR MORE POWER SUPPLIES WITHOUT BUMPLESS TRANSFER.



OPERATING INSTRUCTIONS

- SHOULD A GROUND FAULT OCCUR, THE APPROPRIATE RELAY WILL ENERGIZE & VIA. ITS CONTACTS, PROVIDE THE ALARM SIGNAL.
 NOTE: THE 50-DCF3 WILL RESET AUTOMATICALLY WHEN THE GROUND IS REMOVED, UNLESS THE LOCK-IN/ NON LOCK-IN SWITCH IS IN THE LOCK-IN POSITION, THEN THE GROUND FAULT DETECTOR WILL HAVE TO BE MANUALLY RESET.
- IN CASE OF A GROUND INDICATION, THE FIELD CONTACT OR POWER WIRING SHOULD BE REMOVED ONE POINT AT A TIME UNTIL THE FAULT IS LOCATED.
 NOTE: MULTIPLE FAULTS MAY OCCUR. REPLACE THE WIRING UNTIL ALL FAULTS ARE LOCATED, CORRECTED AND THE SYSTEM RESUMES NORMAL OPERATION.

SIMPLIFIED WIRING DIAGRAM



NOTES:

- IN NORMAL (NON-GROUNDED) CONDITION, THE 50-DCF3-* RELAYS ARE DE-ENERGIZED. (CONTACTS AS SHOWN)
- FOR ADDITIONAL WIRING DETAILS, REFER TO APPLICABLE SYSTEM WIRING DIAGRAMS.
- CONTACT RATING: 0.5A AT 125VAC 2A AT 30VDC.
- GROUND MONITOR SYSTEM MAY NOT BE APPLICABLE IN CERTAIN CASES INVOLVING CONNECTION OF PERIPHERAL EQUIPMENT TO THE FIELD CONTACTS.
- WHEN ISOLATED FC'S ARE USED, CONNECT 50-DCF3-* TO FC SOURCE, TERM. #1 TO (-), TERM. #2 TO (+), TERM. #3 TO GROUND.
- SENSITIVITY IS FACTORY SET AT 47K OHM (470K OHM FOR 50-DCF3-125) AND MAY BE READJUSTED BY POTENTIOMETERS LOCATED ON TOP OF THE PLUG-IN.
- PLUS AND MINUS GROUND FAULT TRIP POINTS ARE INDEPENDENTLY ADJUSTABLE.
- IF LOCK-IN IS NOT REQUIRED, THE EXTERNAL SWITCH MAY BE OMITTED.

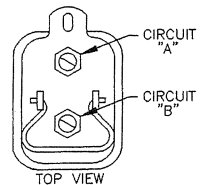
MODEL	VOLTAGE	DETECTION RANGE	LABEL MARKING
	12V DC	25K ohm TO 500K ohm.	WB-3
	24V DC	25K ohm TO 500K ohm	WB-3
	48V DC	25K ohm TO 500K ohm	WB-3
	125V DC	250K ohm TO 1.5M ohm	WB-3
	125V DC	40K ohm TO 260K ohm WITH EXTERNAL 150K ohm RESISTORS	WB-3/150K/150K

OPERATING DATA: (X=ENERGIZED)			
50-DCF3* ALL VOLTAGES			
FAULT RESISTANCE	FAULT LOCATION GND TO	RELAY "A"	RELAY "B"
> "SET" VALUE	NONE	-	-
0 ohms TO "SET" VALUE	PLUS (TERM 2)	-	X
0 ohms TO "SET" VALUE	MINUS (TERM 1)	X	-

- FC3 USED WHEN GND MONITOR IS WIRED TO SYSTEM USING A 90BT* BUMPLESS TRANSFER.

PROCEDURE FOR SETTING (+) AND (-) GROUND DETECTION POINTS

- SET CIRCUIT "A" AND "B" POTENTIOMETERS FULLY COUNTER CLOCKWISE.
- CONNECT DESIRED RESISTANCE VALUE BETWEEN (+) OF FC VOLTAGE AND GROUND ($\frac{+}{-}$).
 - ADJUST CIRCUIT "B" POTENTIOMETER CLOCKWISE UNTIL RELAY CIRCUIT "B" CONTACTS CHANGE STATE (TERMINALS 4, 5 AND 6).
 - REMOVE RESISTANCE AND RELAY CONTACTS 4, 5 AND 6 SHOULD RETURN TO NORMAL STATE.
 - CONNECT DESIRED RESISTANCE VALUE BETWEEN (-) OF FC VOLTAGE AND GROUND ($\frac{-}{+}$).
 - ADJUST CIRCUIT "A" POTENTIOMETER CLOCKWISE UNTIL RELAY CIRCUIT "A" CONTACTS CHANGE STATE (TERMINALS 7, 8 AND 9).
 - REMOVE RESISTANCE AND RELAY CONTACTS 7, 8 AND 9 SHOULD RETURN TO NORMAL STATE.
 - CIRCUIT "A" AND "B" WILL NOW TRIP AT THE DESIRED FAULT RESISTANCE.



REV	ECN NO.	BY	APPD	DATE	MATERIAL: *****
00	9185-15	JJ	JWK	01/24/84	FINISH: *****
01	9298	JJ	PG	02/04/86	USED ON/REF. DWG
02	9967	LJ	DB	11/17/88	50-DCF3-*
03	10600	SK	JE	12/26/90	57100-DCF3-1
04	10680	SK	PG	04/16/91	
05	11872	SK	MAZ	6/15/01	

TOL. UNLESS SPECIFIED	
INCHES	
.X	= .015
.XXX	= .009
MILLIMETERS	
X.0	= 1.0
0.X	= 0.4
0.XX	= 0.1
ANGLES ±0°30'	
SCALE	INCH (MM)
	NONE

AMETEK

1725 WESTERN DRIVE, WEST CHICAGO, ILL., 60185, U.S.A.
 PHONE: 1-630-231-5900 FAX: 1-630-231-4502

PANALARM

WIRING DIAGRAM
 MODEL 50-DCF3 GROUND FAULT MONITOR APPLICATION
 WITH 90 SERIES ANNUNCIATOR

SHEET 1 OF 1 DWG. NO. 90450-DCF3-1 -C-