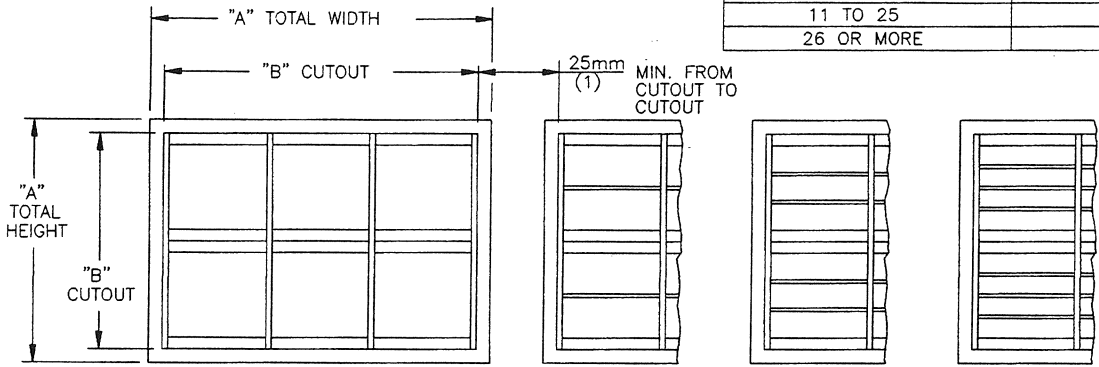


TABLE - "A"

NUMBER OF ANALOG CARDS	NUMBER OF FANS REQUIRED
0 TO 10	0
11 TO 25	1
26 OR MORE	2

FRONT VIEWS

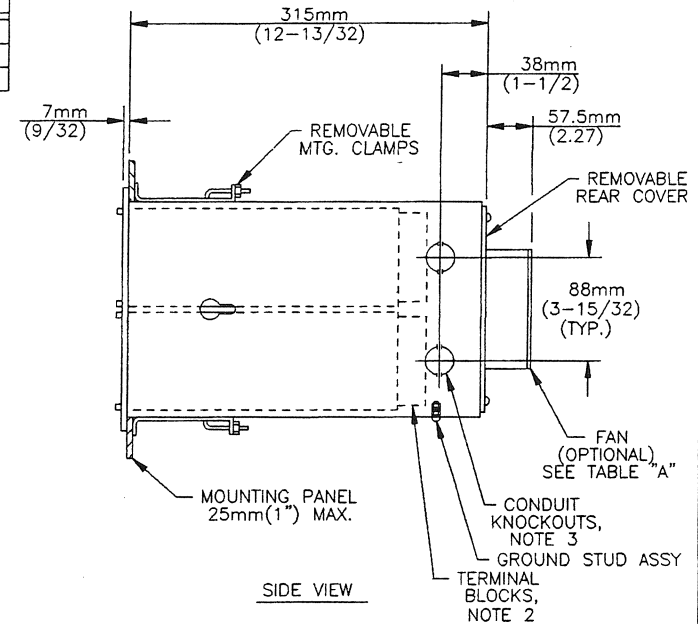


**SINGLE WINDOW PER MODULE**  
76mm HIGH BY 84mm WIDE  
WINDOWS(3"HIGH X 3-5/16"WIDE)

**DUAL WINDOW PER MODULE**  
37mm HIGH BY 84mm WIDE  
WINDOWS  
(1-7/16"HIGH X 3-5/16"WIDE)

**TRIPLE WINDOW PER MODULE**  
24mm HIGH BY 84mm WIDE  
WINDOWS  
(15/16"HIGH X 3-5/16"WIDE)

**QUAD WINDOW PER MODULE**  
18mm HIGH BY 84mm WIDE  
WINDOWS  
(11/16"HIGH X 3-5/16"WIDE)



SIDE VIEW

MODEL NUMBER EXPLANATION:

SERIES 90 \_\_\_\_\_ 9

NUMBER OF TERMINAL BLOCKS \_\_\_\_\_ 8

2 = 2 TB'S PER MODULE

4 = 4 TB'S PER MODULE

ANNUNCIATOR CABINET, VARIATION \_\_\_\_\_

CA = FLUSH MOUNT

RS = FLUSH MOUNT, W/RS422 COMM, LINK

MODULE ROWS HIGH \_\_\_\_\_

1 TO 10

MODULE COLUMNS WIDE \_\_\_\_\_

2 TO 10

COOLING FAN OPTION \_\_\_\_\_

(OMIT FIELD IF NOT REQUIRED)

CF1 = ONE COOLING FAN INSTALLED

CF2 = TWO COOLING FANS INSTALLED

BUS(CARD EDGE CONTACT)FINISH OPTION \_\_\_\_\_

(BLANK FIELD INDICATES STANDARD TIN PLATING)

G7 = GOLD PLATE PER ENG-151-10

GB = GOLD FLASH PER ENG-151-10

CABINET FINISH \_\_\_\_\_

(BLANK FIELD INDICATES STANDARD BAKED BLACK ENAMEL FINISH PER ENG-151-1)

X1 = ASA-61 GREY FINISH

WINDOW ENGRAVING CHART

WINDOW STYLE	CHARACTER SIZE HIGH(APPROX)	MAX. LINES PER WINDOW	MAX. CHARACTER & SPACES PER LINE
SINGLE ROW	12-1-3 (9/32)	6	12
DUAL ROW	12-1-4 (7/32)	4	16
TRIPLE ROW	12-1-5 (3/16)	3	22
QUAD ROW	12-1-6 (5/32)	3	26

CABINET SIZE		"A" DIMENSION	"B" +1/32 -0 DIMENSION
MODULE ROWS HIGH	MODULE COLUMNS WIDE		
1	-	127(5)	103(4-1/16)
2	2	215(8-15/32)	191(7-17/32)
3	3	303(11-15/16)	279(11)
4	4	391(15-13/32)	368(14-15/32)
5	5	479(18-7/8)	456(17-15/16)
6	6	568(22-11/32)	544(21-13/32)
7	7	656(25-13/16)	632(24-7/8)
8	8	744(29-9/32)	720(28-11/32)
9	9	832(32-3/4)	808(31-13/16)
10	10	920(36-7/32)	896(35-9/32)

NOTES:

- ALL DIMENSIONS ARE IN MILLIMETERS WITH CORRESPONDING INCH DIMENSIONS IN PARENTHESES.
  - TERMINAL BLOCKS ARE WIRED FROM REAR.
  - 28mm KNOCKOUT (3/4" CONDUIT) ONE EACH SIDE FOR EACH ROW HIGH AS SHOWN AND ONE EACH ON TOP AND BOTTOM FOR EACH COLUMN WIDE (NOT SHOWN).
  - STANDARD WINDOW NAMEPLATES ARE WHITE TRANSLUCENT POLYCARBONATE WITH ENGRAVED BLACK FILLED CHARACTERS PER CHART.
  - LAMPS ARE ACCESSIBLE BY REMOVING SNAP-OFF WINDOW NAMEPLATES.
  - PLUG-IN ALARM CARDS ARE ACCESSIBLE BY REMOVING PULL-OUT LIGHTBOX ASSEMBLIES.
  - MODULE ROWS HIGH AND MODULE COLUMNS WIDE REFERS TO THE MODULES, NOT THE INDIVIDUAL WINDOWS.
- 8 2 TERMINAL BLOCKS PER MODULE DISCONTINUED AS OF JAN. 1987.

REV	ECN NO.	BY	APPD	DATE	MATERIAL:
09	10512	SM	JT	10/12/90	FINISH:
10	10390-10	SM	JT	11/30/90	USED ON/REF. DWG
11	11002	SM	JT	05/11/92	94CA*
12	11002-01	SM	JT	06/19/92	
13	7095-10	SK	AHD	11/12/92	
14	11354	SK	JT	08/25/93	
15	11872	SK	Hand	6/15/01	

TOL UNLESS SPECIFIED

INCHES  
X = .015  
.XX = .010  
.XXX = .005

MILLIMETERS  
X.0 = 1.0  
0.X = 0.4  
0.XX = 0.1

ANGLES X

SCALE MM (INCH)

**AMETEK**

**PANALARM** 1725 WESTERN DRIVE, WEST CHICAGO, ILL. 60185, U.S.A.  
PHONE: 1-630-231-5900 FAX: 1-630-231-4502

DWL BY: DMW/SM  
APPO/DATE ARF: 04/15/81  
THIRD ANGLE PROJECTION

DIMENSIONAL OUTLINE MODEL 94CA\*  
FLUSH MOUNT ANNUNCIATOR CABINET

SHEET 1 OF 1 DWG. NO. 90100-CA-1 -C-