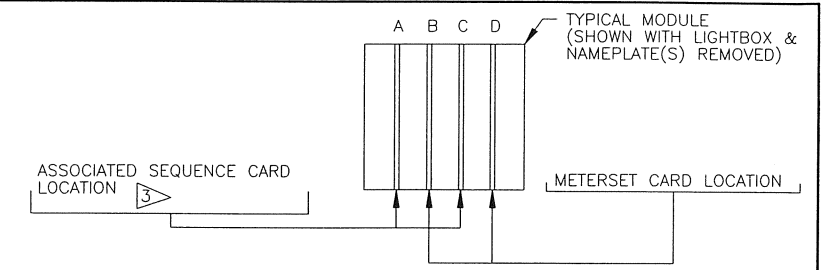
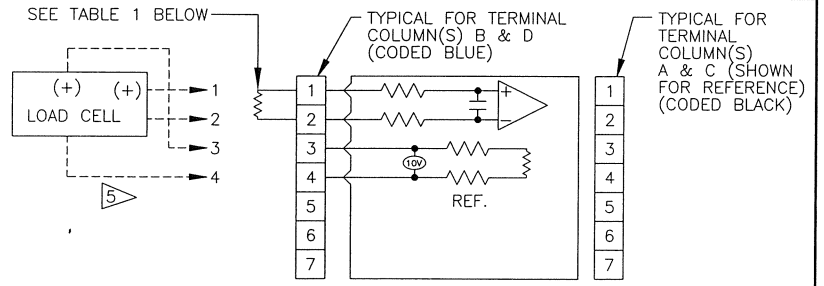


- NOTES:
- SEE DRAWING NO. 90400-DD*-1 FOR STANDARD DIGITAL DISPLAY CONFIGURATION & INTERFACE WITH METER SET, FOR SYSTEMS UP TO 5 MODULES WIDE (100 POINTS MAX.)
 - SEE DRAWING NO. 90400-DD*-2 FOR EXPANDED DIGITAL DISPLAY CONFIGURATION & INTERFACE WITH METER SET, FOR SYSTEMS UP TO 10 MODULES WIDE (200 POINTS MAX.)
 - FOR MODELS 91AD1* (SINGLE SET) METER SET ANALOG CARD(S), USE SINGLE POINT SEQUENCE CARD(S) WITH DM12DC INPUT. FOR MODELS 91AD2* (DUAL SET) METER SET ANALOG CARD(S), USE TWIN POINT SEQUENCE CARD(S) WITH DM12DC INPUT.
 - USED TO MONITOR TRANSDUCER STATUS DURING CUSTOMER CALIBRATION, REF. INSTRUCTION MANUAL & TEST PROBE. MODEL 90TP2 TEST PROBE TO BE USED TO CONNECT TEST JACK "TP1" TO CUSTOMER'S MULTIMETER.
 - TO EXPAND AVAILABLE SETPOINTS TO A MAXIMUM OF 4, CONNECT A CARD CONTAINING OPTION "1NE" AS FOLLOWS: PARALLEL CUSTOMER TERMINALS 1-4 ON "1NE" CARD TO CUSTOMER TERMINALS 1-4 ON STANDARD CARD.

DASHED LINES INDICATE CUSTOMER FIELD WIRING



TYPICAL CARD ARRANGEMENT WITH STANDARD MODULE
(SEQUENCE CARD POS."A", INTERFACED WITH METER SET ANALOG CARD, POS."B")
(SEQUENCE CARD POS."C", INTERFACED WITH METER SET ANALOG CARD, POS."D", IF USED)



SIGNAL INPUT WIRING DIAGRAM

MODEL	DISPLAY		SIGNAL			FACTORY INSTALLED RESISTOR
	MIN.	MAX.	EXC V	LOW MIN mV/V	HIGH MAX mV/V	
91AD*LC1	0.0E	100.0E	10	3.5	5.0	4.7K OHM, 5%, 1/4W, P/N 630386
91AD*LC2	0.0E	100.0E	10	1.0	3.5	
91AD*LC3	0.0E	100.0E	5	7.0	10.0	
91AD*LC4	0.0E	100.0E	5	2.0	7.0	

TABLE 1
RESISTOR SHOWN IS INSTALLED BY THE FACTORY TO PREVENT SENSOR FAILURE INDICATION ON UNASSIGNED POSITIONS. REMOVE RESISTOR ONLY WHEN POSITION IS ASSIGNED.

REV	ECN NO.	BY	APPD	DATE	MATERIAL:
07	10319	SK	AHD	01/09/90	FINISH:
08	11872	SK	<i>ma</i>	6/15/01	USED ON/REF. DWG DESCRIPTION
					91AD* METER SET ANALOG DWG. LIST
					900252 INSTRUCTION MANUAL
					91900-AD-1 METER SET OPTION LIST
					90DD* DIGITAL DISPLAY DWG. LIST

TOL. UNLESS SPECIFIED

INCHES
.X = .015
.XX = .010
.XXX = .005

MILLIMETERS
X.0 = 1.0
0.X = 0.4
0.XX = 0.1

ANGLES ±0'30"

SCALE INCH (MM)

NTS

PANALARM

DWN. BY ARF / SK

APPD/DATE JES 07/07/82

THIRD ANGLE PROJECTION

AMETEK

PANALARM 1725 WESTERN DRIVE, WEST CHICAGO, IL., 60185, U.S.A.
PHONE: 1-630-231-5900 FAX: 1-630-231-4502

INPUT WIRING DIAGRAM FOR MODEL 91AD*LC*
LOAD CELL (STRAIN GAUGE)
USED ON SERIES 90 METER SET ANALOG

SHEET 1 OF 1 DWG. NO. 91450-LC*-1 -B-