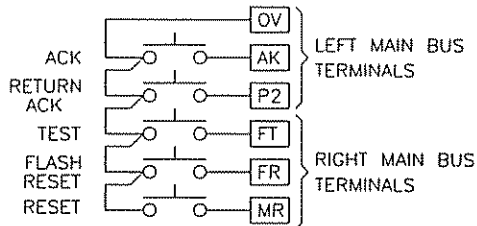


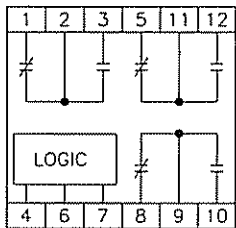
REMOTE PUSHBUTTON WIRING



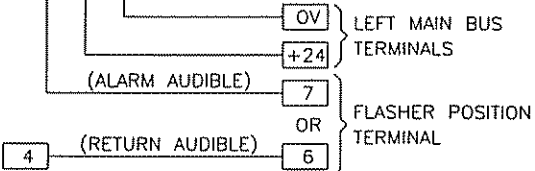
INTEGRAL PUSHBUTTON MODEL NO 90PB52*

COMMON AUXILIARY RELAY WIRING

FOR CUSTOMER USE IF REQUIRED



MODEL 90AX1 (DE-ENERGIZED IN NORMAL) OR 90AX2 (ENERGIZED IN NORMAL) WITH WB-3 WIRING BOX

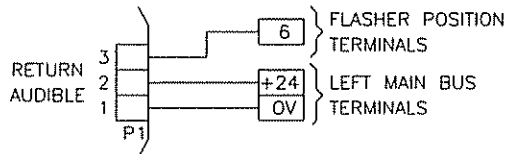
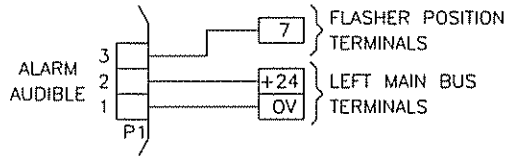


(2nd AUX RELAY)

RELAY CONTACTS RATED 4 AMPS AT 250V AC OR 5 AMPS AT 28V DC OR 120V AC AND 0.5 AMP AT 125V DC RESISTIVE LOAD.

NT2-24D AUDIBLE DEVICE WIRING

DIAGRAM SHOWS NOVATONE HORN WITH P1 TERMINAL BLOCK ON P.C BOARD ATTACHED TO HORN (REF DWG 57100-48) FOR EARLIER VERSIONS WITH PIGTAIL LEADS. CONNECT BLACK TO OV. RED TO +24 AND BLUE TO FLASHER TERMINAL (REF DWG 57100-44)



ALARM PLUG-IN CARD MODEL NO. 91 AR 7
 SINGLE POINT = 91
 SEQUENCE CODE
 VARIATION
 INPUT OPTIONS DRAWING LIST REFER TO 91900-9
 OUTPUT OPTIONS DRAWING LIST REFER TO 91900-9

OPERATIONAL SEQUENCE "FRRS"

INPUT STATUS	VISUAL	ALARM AUDIBLE	RETURN AUDIBLE
ALARM OR TEST	FAST FLASH	ON	OFF
ACKNOWLEDGE	FAST FLASH	OFF	OFF
FLASH RESET	STEADY-ON	OFF	OFF
RETURN TO NORMAL	SLOW FLASH	OFF	ON
RETURN ACKNOWLEDGE	SLOW FLASH	OFF	OFF
RESET	OFF	OFF	OFF

NOTES:

- 1 IF A NEW ALARM OCCURS WHILE TESTING. POINT WILL INDICATE ALARM CONDITION (RE-ALARM) AFTER FLASH RESET PUSHBUTTON IS OPERATED
- 2 POINT WILL INDICATE ALARM WHEN TEST PUSHBUTTON IS OPERATED IF THE VISUAL INDICATOR IS OFF OR STEADY-ON
- 3 IF POINT REALARMS WHILE SLOW FLASHING (RETURNED TO NORMAL) POINT REVERTS TO ALARM STATUS
- 4 A SINGLE AUDIBLE DEVICE MAY BE USED BY CONNECTING TERMINALS 6 & 7 OF THE FLASHER POSITION TOGETHER

REV	ECN NO.	BY	APPD	DATE	MATERIAL:
00	7097-69B	SK	CNL	12/15/99	FINISH:
01	11872	SK	<i>MKT</i>	6/15/01	USED ON/REF. DWG
					DESCRIPTION

TOL. UNLESS SPECIFIED
 INCHES
 .X = 015
 .XX = 010
 .XXX = 005
 MILLIMETERS
 X0 = 10
 0.X = 04
 0.XX = 01
 ANGLES ±0.30
 SCALE INCH (MM)
 NONE

AMETEK
 PANALARM
 DWN. BY S. KUNCA
 APPD/DATE CNL 12/15/99
 THIRD ANGLE PROJECTION

AMETEK
PANALARM 1725 WESTERN DRIVE, WEST CHICAGO, IL, 60185, U.S.A.
 PHONE: 1-630-231-5900 FAX: 1-630-231-4502
 CUSTOMER WIRING DIAGRAM AND SEQUENCE 'FRRS' INFORMATION FOR SERIES 90 UNIVERSAL P.C.B.
 SHEET 1 OF 1 DWG NO 90450-AR7-2 -B-