

NOTES:

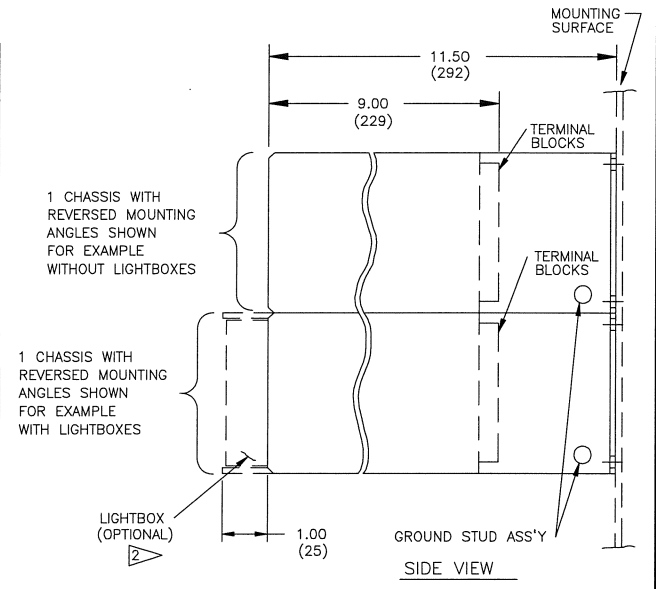
1. PARENT ITEM NUMBER EXPLANATION
- SERIES 90 REMOTE LOGIC RACK MOUNT CHASSIS
- CHASSIS STYLE VARIATION CODE
- 01 = 5 MODULES WIDE
 - 02 = 5 MODULES WIDE, WITH LIGHTBOXES (9*LA*)
 - 08 = 8 MODULES WIDE, REVERSE MOUNTING ANGLES
 - 09 = 4 MODULES WIDE, REVERSE MOUNTING ANGLES
 - 10 = 5 MODULES WIDE, SPECIAL, WITH ISOLATED FLASHER CARD, 10 CARD MAXIMUM PER CHASSIS 90CWB6 REQUIRED FOR CROSSOVER CONNECTIONS (PANALARM, CANADA)
 - 11 = 2 MODULES WIDE, REVERSE MOUNTING ANGLES, WITH LIGHTBOXES(9*LA*)
 - 12 = 4 MODULES WIDE
 - 13 = 3 MODULES WIDE, REVERSE MOUNTING ANGLES
 - 14 = 2 MODULES WIDE, WITH LIGHTBOXES (9*LA*)
 - 15 = 3 MODULES WIDE, WITH LIGHTBOXES (9*LA*)
 - 16 = SPECIAL, 5 MODULE WIDE, ELCO, 56 PIN CONN., ON BOTTOM SIDE OF CHASSIS (STD. REMOTE LOGIC).
 - 17 = 5 MODULES WIDE, REVERSE MOUNTING ANGLES
 - 18 = 5 MODULES WIDE, REAR ACCESS TERMINALS, WITH CONNECTOR PLATE
 - 19 = 5 MODULES WIDE, REAR ACCESS TERMINALS, WITH CONNECTOR PLATE, REVERSE MOUNTING ANGLES
 - 20 = 5 MODULES WIDE, REAR ACCESS TERMINALS, SHALLOW DEPTH MOUNTING ANGLES
- CONNECTOR AND WIRING OPTION VARIATION CODE (OPTIONAL)
- LXX**** = CONNECTOR(S) FOR LAMPS
 - LFX**** = CONNECTOR(S) FOR LAMPS AND SIGNALS
 - LFA**** = CONNECTOR(S) FOR LAMPS, SIGNALS, AND AUX.
 - XFX**** = CONNECTOR(S) FOR SIGNALS
 - XFA**** = CONNECTOR(S) FOR SIGNALS AND AUX.
 - LXA**** = CONNECTOR(S) FOR LAMPS AND AUX.
 - XXA**** = CONNECTOR(S) FOR AUX.
- WIRING OPTIONS (4 DIGITS, SEQUENTIAL, NON-SIGNIFICANT)
- BUS(CARD EDGE CONTACT)FINISH OPTION
(BLANK FIELD INDICATES STANDARD TIN PLATING)
- G7 = GOLD PLATE PER ENG-151-10
 - G8 = GOLD FLASH PER ENG-151-10

WINDOW ENGRAVING CHART

WINDOW STYLE	CHARACTER SIZE HIGH (APPROX)	MAX. LINES PER WINDOW	MAX. CHARACTER & SPACES PER LINE
SINGLE ROW	12-1-3 0.281 (7)	6	12
DUAL ROW	12-1-4 0.219 (6)	4	16
TRIPLE ROW	12-1-5 0.188 (5)	3	22
QUAD ROW	12-1-6 0.156 (4)	3	26

MOUNTING DIMENSION CHART

MODULES WIDE	DIM. 'A'	DIM. 'B'	DIM. 'C'
2	8.50 (216)	7.813 ± 0.063 (198 ± 2)	7.22 (183)
3	12.00 (305)	11.313 ± 0.063 (287 ± 2)	10.72 (272)
4	15.50 (394)	14.813 ± 0.063 (376 ± 2)	14.22 (361)
5	19.00 (483)	18.313 ± 0.063 (465 ± 2)	17.72 (450)
8	29.50 (749)	28.813 ± 0.063 (732 ± 2)	28.22 (717)



WHEN LIGHTBOXES ARE USED, LAMPS ARE ACCESSIBLE BY REMOVING SNAP-OFF WINDOW (NAMEPLATE). PLUG-IN CARDS ARE ACCESSIBLE BY REMOVING PULL-OUT LIGHTBOX ASSEMBLIES. STANDARD WINDOW NAMEPLATES ARE WHITE TRANSLUCENT POLYCARBONATE WITH ENGRAVED BLACK FILLED CHARACTERS PER CHART.

REV	ECN NO.	BY	APPD	DATE	MATERIAL: *****
03	10573-01	SM	JT	04/05/91	FINISH: ZINC PLATE/CLEAR CHROMATE
04	7095-10	SK	AHD	11/12/92	USED ON/REF. DWG
05	11499	SK	AD	09/28/94	94R*
06	6351	SK	MAL	03/21/01	90800-RM-1
					900364

TOL. UNLESS SPECIFIED

INCHES
.X = .015
.XX = .010
.XXX = .005

MILLIMETERS
X.0 = 1.0
0.X = 0.4
0.XX = 0.1

ANGLES ±0°30'

SCALE INCH NONE (MM)

PANALARM 1725 WESTERN DRIVE, WEST CHICAGO, ILL., 60185, U.S.A.
PHONE: 1-630-231-5900 FAX: 1-630-231-4502

DIMENSIONAL OUTLINE, REAR ACCESS TERMINALS, REMOTE LOGIC, RACK MOUNT CHASSIS

SHEET 1 OF 1 DWG. NO. 90100-RM-1 -C-